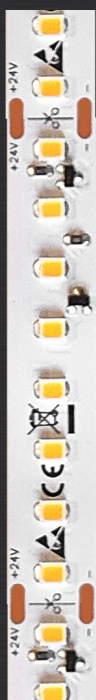


# FLEX - STANDARD 1000-3000

## Led Strip



Alimentazione / Operating Voltage	24 V
Potenza / Power	7,5 W/mt
Larghezza Pcb / Width Pcb	12 mm
Altezza / Height Stripe	2 mm
Lunghezza / Length Stripe	5000 mm
Taglio segmento/ Length per Cut	63 mm
N° LED	128 / mt
IP	20
Temperatura esercizio Storage Temperature	- 30° C - + 70°C
Lifetime	L70B20 50000H

	Flusso Luminoso Luminous Flux	Efficienza Efficiency	Colore Luce Led Color
DA-STANDARD-1000-3000	936 lm/mt	125 lm/W	3000 K



Via Cadorna, 40/42  
20032 Cormano (MI)  
Tel. +39 02 84269630  
Fax +39 02 84269631  
info@dadalighting.com  
www.dadalighting.com

# FLEX - STANDARD 1000-3000

Led Strip

Light efficiency:

125 Lumen/Watt

Output: 936 lm

Light quality:

CRI: 92,1

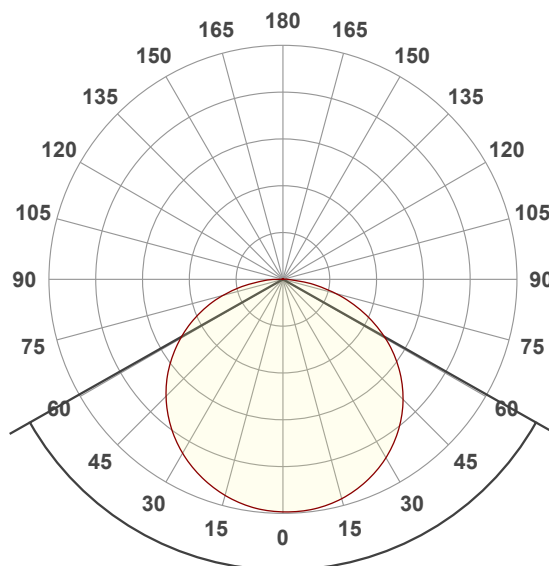
Peak: 294 cd

Color temperature:

3027 K

Power: 7,5 W

24,0V @ 0,313A



Beam angle

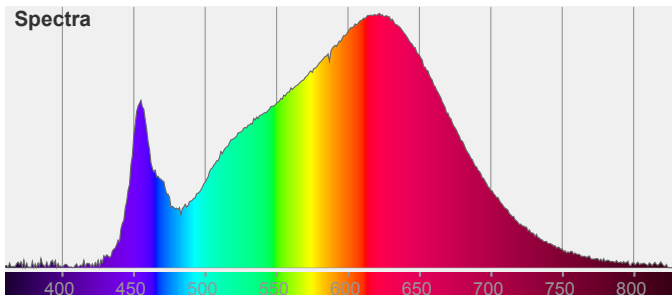
**121°**

Color



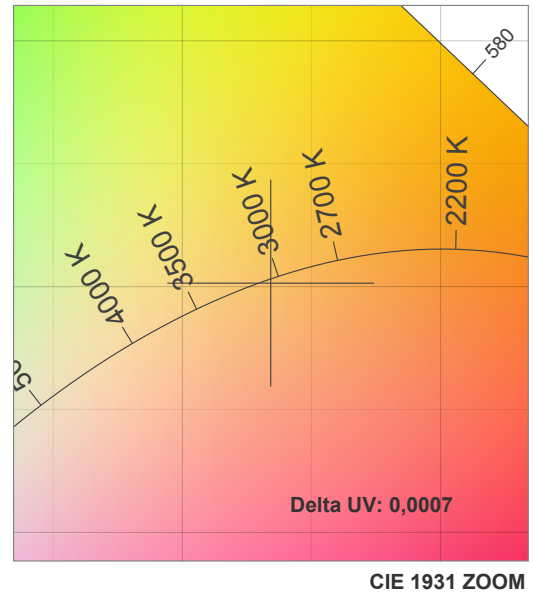
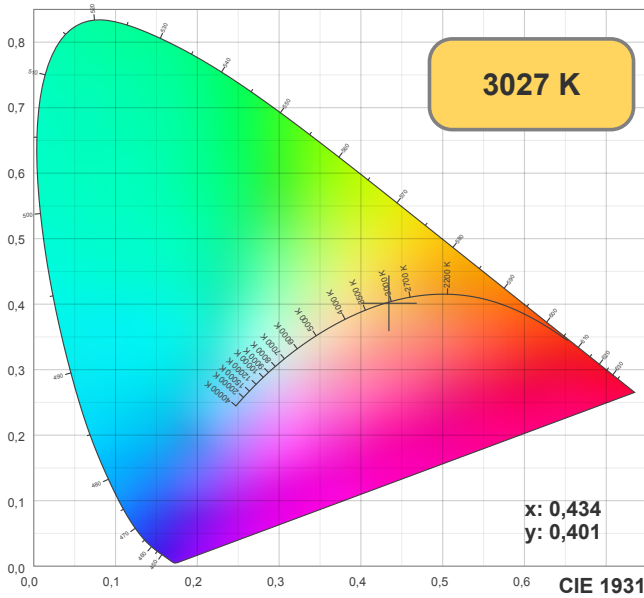
CIE1931  
x: 0,434  
y: 0,401

Spectra

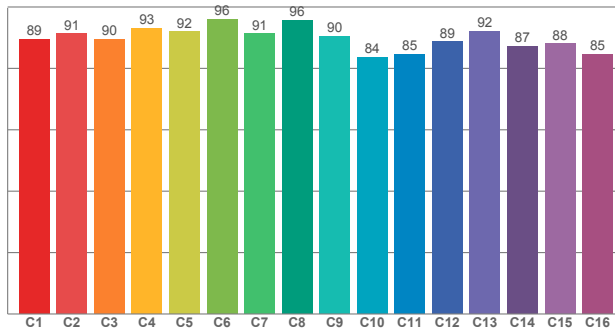


# FLEX - STANDARD 1000-3000

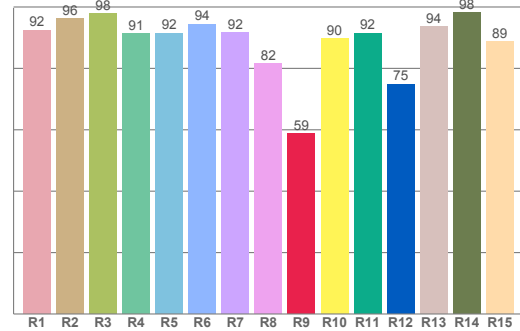
## Led Strip



**TM30: 89,9**



**CRI: 92,1 (R1-R8)**



**CRI R values, only R1-R8 are used to calculate final CRI value**

R1	R2	R3	R4	R5	R6	R7	R8	R9	R10	R11	R12	R13	R14	R15
92,48	96,24	97,74	91,40	91,52	94,43	91,68	81,58	58,75	89,61	91,51	74,82	93,62	98,17	88,75

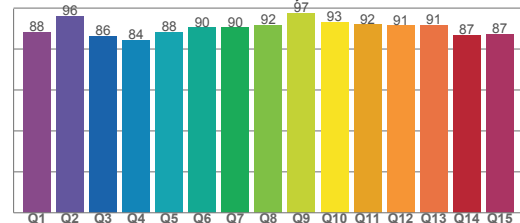
**TM30 C values, 16 binned values out of total of 99 C values**

C1	C2	C3	C4	C5	C6	C7	C8	C9	C10	C11	C12	C13	C14	C15	C16
89,48	91,29	89,55	93,13	91,88	96,05	91,23	95,74	90,48	83,68	84,64	88,70	92,10	87,26	88,14	84,61

**CQS Q values**

Q1	Q2	Q3	Q4	Q5	Q6	Q7	Q8	Q9	Q10	Q11	Q12	Q13	Q14	Q15
88,36	95,88	86,22	84,33	88,19	90,42	90,50	91,58	97,45	93,30	91,95	91,47	91,50	86,80	87,40

**CQS: 89,6**

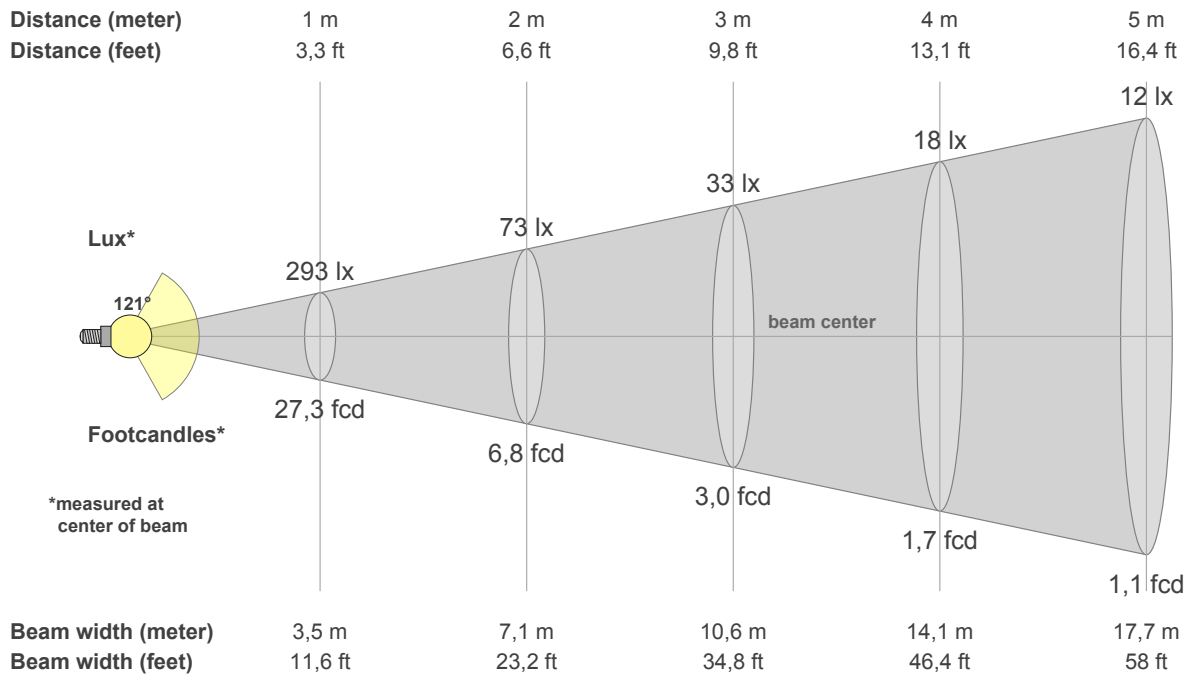


### Color parameters

CCT	CRI	CRI R9	TM30 Rf	TM30 Rg	CQS	x	y	u	v	Duv
3027 K	92,1	58,8	89,9	98,3	89,6	0,4	0,4	0,2	0,3	-0,0007

# FLEX - STANDARD 1000-3000

## Led Strip



### Intensities in 0° c-plane

0°	5°	10°	15°	20°	25°	30°	35°	40°	45°	50°	55°	60°	65°	70°	75°	80°	85°	90°	95°
293	293	291	287	279	270	260	246	231	214	195	173	149	124	97	70	42	20	6	1
100%	100%	99%	98%	95%	92%	89%	84%	79%	73%	66%	59%	51%	42%	33%	24%	14%	7%	2%	0%

### Intensities in 0° c-plane

0°	5°	10°	15°	20°	25°	30°	35°	40°	45°	50°	55°	60°	65°	70°	75°	80°	85°	90°	95°
293	293	291	287	279	270	260	246	231	214	195	173	149	124	97	70	42	20	6	1
100%	100%	99%	98%	95%	92%	89%	84%	79%	73%	66%	59%	51%	42%	33%	24%	14%	7%	2%	0%

### Intensities in 180° c-plane

0°	5°	10°	15°	20°	25°	30°	35°	40°	45°	50°	55°	60°	65°	70°	75°	80°	85°	90°	95°
293	292	288	282	274	264	253	240	225	208	190	170	149	127	103	78	53	29	12	2
100%	99%	98%	96%	93%	90%	86%	82%	77%	71%	65%	58%	51%	43%	35%	27%	18%	10%	4%	1%

### Intensities in 180° c-plane

0°	5°	10°	15°	20°	25°	30°	35°	40°	45°	50°	55°	60°	65°	70°	75°	80°	85°	90°	95°
293	292	288	282	274	264	253	240	225	208	190	170	149	127	103	78	53	29	12	2
100%	99%	98%	96%	93%	90%	86%	82%	77%	71%	65%	58%	51%	43%	35%	27%	18%	10%	4%	1%

Beam angle 50%	Field angle 10%	Cutoff angle 2,5%	Intensity ratio in 120° cone	Intensity ratio in 90° cone
121,0°	167,8°	180,4°	74,9%	49,7%